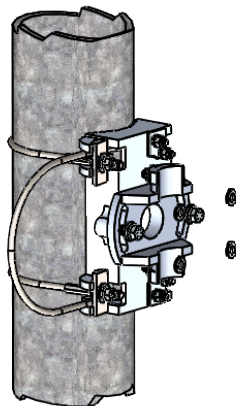
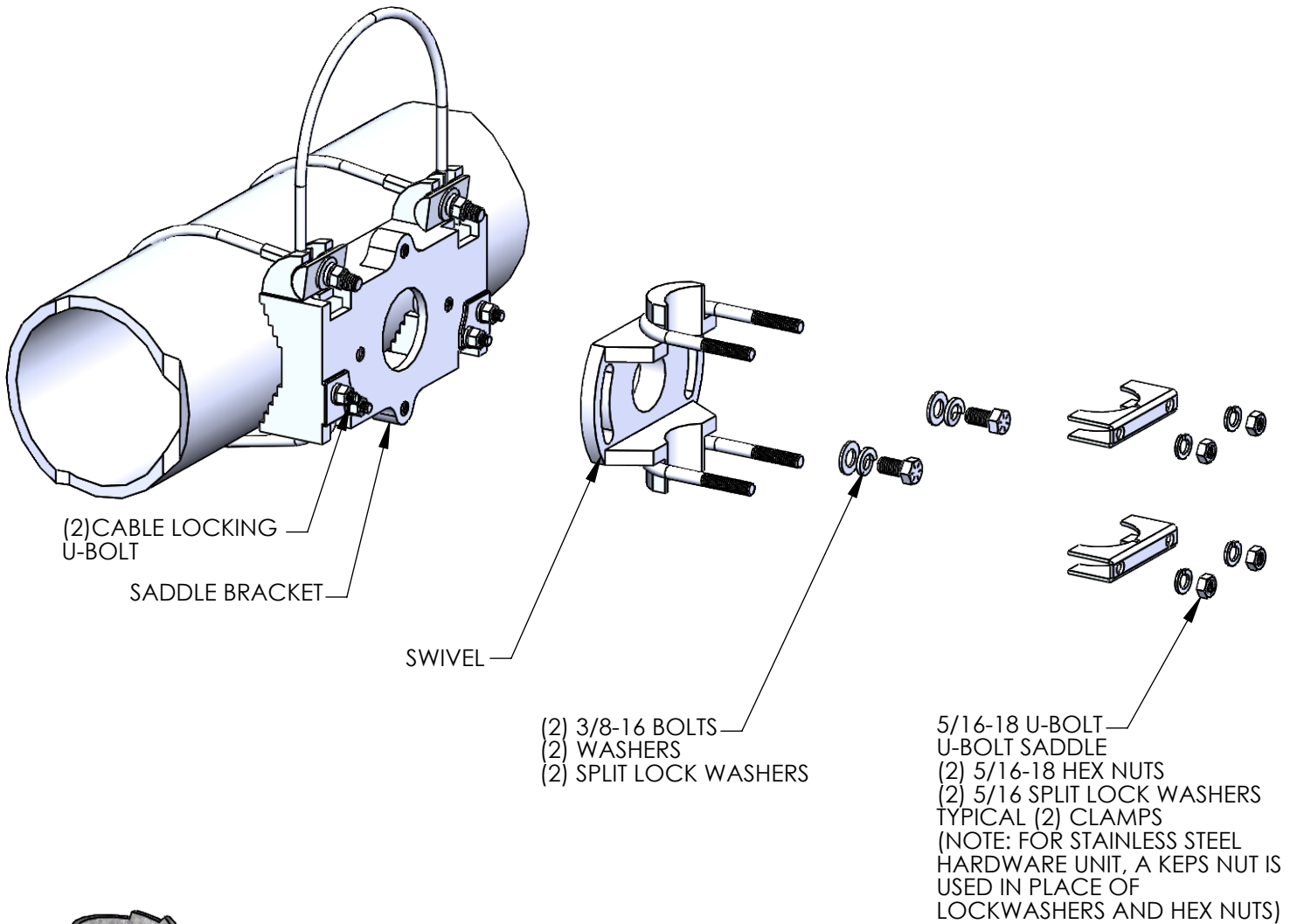


CABLE STYLE CLAMP MOUNTING  
*SS-SBCXX-SCK*



ALTERNATE MOUNTING

TORQUE CHART	
FASTENER SIZE	TORQUE
5/16"	10 FT-LBS
3/8"	15 FT-LBS
1/2"	15 FT-LBS

# Installation Instructions

## Adjustable Camera Mount – Cable Style

### Preparation:

Read and understand these instructions prior to beginning.

Review installation instructions provided by camera manufacturer. Verify mounting location and method is acceptable.

Check parts against the installation drawing accompanying these instructions, verify all necessary components are present and undamaged.

Review tools required to perform the installation, ensure all tools are present and in good working order prior to beginning the installation process:  
1/2" Open end wrench, 9/16" Open end wrench, 1/2" Socket, 9/16" Socket, Ratchet driver, Vise-Grip pliers, Adjustable wrench.

Safety first! Review and adhere to all applicable work zone safety information to ensure installer safety.

### Installation:

Determine mounting location - When determining the mounting location careful thought must be given to ensure access to tensioning components, adjustment screws and electrical connections.

Mount saddle bracket – Position saddle on mast arm with cable loop on top. While holding saddle in position route loose cable ends under mast arm and place cable stops in cradles on saddle. Take care to ensure cable is laying in groove in cradles. Pull up on the "loop" to remove all slack. Tighten 2 cable locking u-bolts. Adjust position of saddle if required. Tighten cables while keeping studs on cable from turning. Cable must be tight enough to ensure mounting bracket does not shift or slip under load.

Mount pole top adapter – Place pole top adapter on top of pole, care must be taken to align notch in pole with tab in adapter casting. Securely tighten u-bolt and torque to 10 ft lbs.

Attach camera yoke – Bolt camera yoke to pole top adapter with the supplied 1/2" hardware *hand tighten* only.

Mount swivel casting – After determining the approximate desired location, taking care to keep the slot in the middle of casting attach swivel to extruded pole with 5/16" u-bolts and saddles *hand tighten* only.

Assemble pole and swivel to saddle – Position the assembly on the face of saddle using the cast in boss on the swivel as a locator, bolt the assembly in place with the supplied 3/8" hardware *hand tighten* only.

Mount camera – Attach camera to camera yoke with the supplied 3/8" hardware *hand tighten* only.

Adjust camera – Move camera up or down to get the desired height. Follow camera manufacturer's instructions for proper aiming of the camera.

Tighten mounting hardware – After aiming the camera securely tighten all fasteners. 5/16" hardware to be torque to 10 ft lbs, 3/8" hardware to be torqued to 15 ft lbs, 1/2" hardware to be torqued to 20 ft lbs.

Install foam pole seal – After completing wire routing through the extruded pole, firmly seat the foam sealer into the slot in pole. Seal may be cut to facilitate wire exit/entrance into the pole.

Secure excess cable – Wrap excess cable loop around aluminum pole. Capture loop and both cable legs in the oval threaded connector as shown in the picture below. Screw oval threaded connector closed. Three cable sections should be inside the oval threaded connector.

Use of anti-seize products conforming to MIL-PRF- 907E or equivalent on threaded connections may be advantageous, but are not required.

### Inspection:

Review installation – Verify all hardware is tightened to proper specifications and cable is sufficiently tight to prevent movement.

Camera view – Verify camera is aimed properly, camera may be readjusted by loosening threaded hardware as required. Retighten hardware if adjustments are required.

