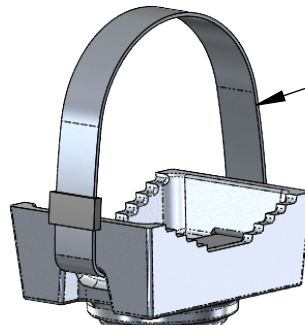
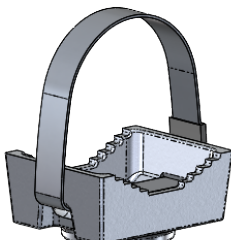


BAND AND BUCKLE
304 SS (BAND)
316 SS (BUCKLE)

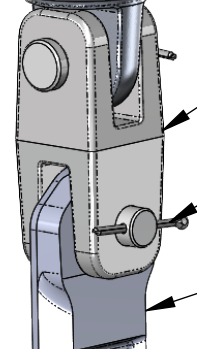


CAST CABLE
CLAMP SADDLE



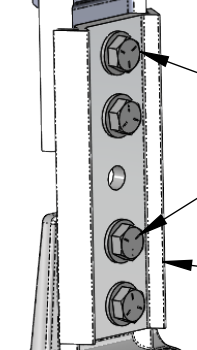
CAST CLEVIS

(2) 5/8 X 2 CLEVIS PIN
(2) 1/8 STAINLESS COTTER PIN

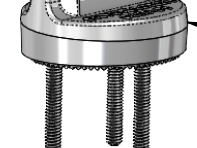


HANGER BAR

(4) 5-16 X 1-1/2 HEX BOLT
(4) 5/16 FLAT WASHER
(4) 5/16 HEX NUT

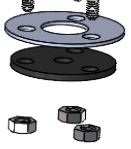


EXTENDER



TRI-STUD MOUNT

(1) RUBBER SEAL
(1) LOWER RETAINING RING
(3) 5/16 KEPS NUT



PART NUMBER

SB29-PFS-TSA

BAND LENGTH

BAND LENGTH	MAST ARM DIA.
29"	3" - 7"
42"	7" - 11"
59"	12" - 15"
70"	18" - 21"

NOTES:

1. PLATED STEEL FASTENERS
2. AVAILABLE WITH CABLE STYLE CLAMP

THE INFORMATION CONTAINED IN THIS DRAWING IS THE SOLE PROPERTY OF SKYBRACKET. ANY REPRODUCTION IN PART OR WHOLE WITHOUT THE WRITTEN PERMISSION OF SKYBRACKET IS PROHIBITED.



TITLE
PITCHED FREE SWINGING SIGN MOUNT -TSA - BAND

APPROVALS	BY	DATE
DRAWN	TRC	3/31/2023
SALES		
ENGINEERING		

SIZE A	DWG. NO. SB29-PFS-TSA	REV. A
-----------	--------------------------	-----------

DO NOT SCALE DRAWING

SCALE: NTS CAD FILE: SB29-PFS-TSA

SHEET 1 OF 1